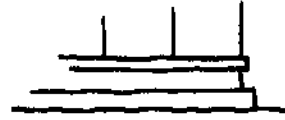


Architektonische Details

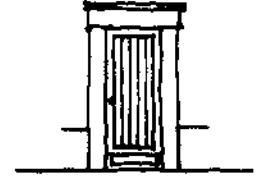
Handbuch und Planungshilfe

Tobias Nöfer

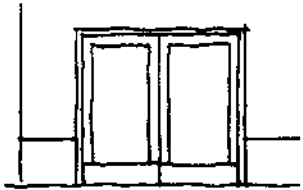
Vorwort	6
1 Fassade	8
2 Dach	172
3 Innenausbau	222
4 Bauten im Außenraum	344
Anhang	376



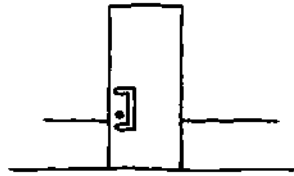
Sockel
1.1



Türen
1.2



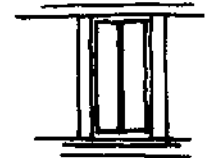
Tor
1.3



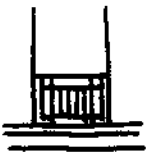
Türgriff
1.4



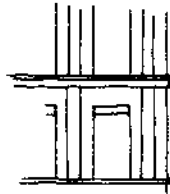
Klingeltableau
1.5



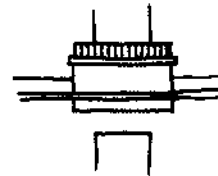
Fenster
1.6



Gitter
1.7



Fassadengliederung
1.8



Fassadenelemente
1.9



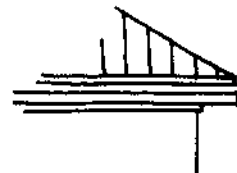
Dach
2.1



Attika
2.2



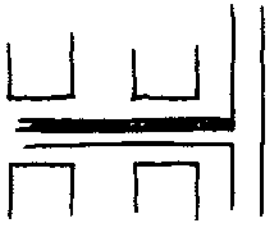
Dachfirst
2.3



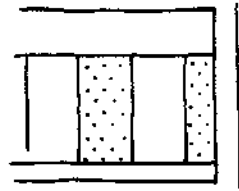
Traufe
2.4



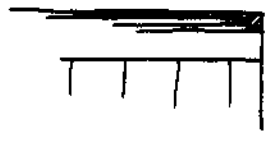
Oberlicht
2.5



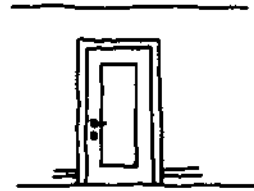
Bodenbelag
3.1



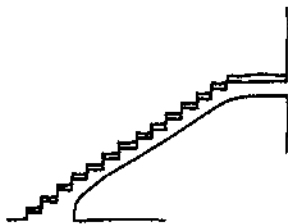
Wandbekleidung
3.2



Deckenbekleidung
3.3



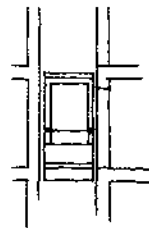
Innentür
3.4



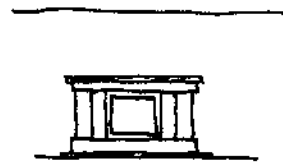
Treppe
3.5



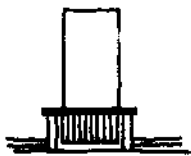
Geländer
3.6



Aufzug
3.7



Kamin
3.8



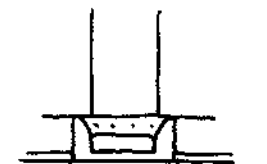
Heizkörperverkleidung
3.9



Briefkastenanlage
3.10



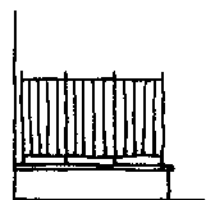
Einbauschränk
3.11



Sitzbank
3.12



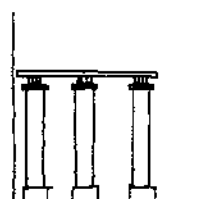
Mauer
4.1



Zaun
4.2



Außentreppe
4.3



Pergola
4.4